



**COMMUNITIES FOR A LIFETIME**

---

# AGENDA

---

- × Welcome & Introductions
- × Overview of CMCOA
- × Results of Regional Survey
- × Discussion
- × Next Steps

# CENTRAL MN COUNCIL ON AGING

---

- × Designated area agency on aging for 14 county central region of Minnesota
- × Information & Assistance
  - + Senior Linkage (1-800-333-2433)
- × Grants & Contracts Administration
- × Administration & Planning

# COMMUNITIES FOR A LIFETIME

---

- × History & Background of CFL
- × Innovative and comprehensive ways of thinking about demography, e.g.:
  - + “Hard” and “soft” planning
  - + Non-age-segregated housing
  - + Roll-able communities
- × Making communities places for all ages, cultures and abilities

# WHY CFL?

---

- × By 2030 1:4 Minnesotans will be over the age of 65 – more seniors than children
- × 24% of Minnesota baby boomers will NOT have adequate retirement income to support health care costs
- × Only 46% of U.S. communities have begun planning to address the aging of the baby boomers

*Sources: MN Department of Human Services, U.S. Census, & Maturing of America*

# SURVEY BACKGROUND

---

- × Funding through SAIL/EDP
- × SCSU surveyed 156 local governments in 14-county service area
  - + Administrators, managers, clerks, etc.
- × In depth interviews still occurring
  - + Specific initiatives related to CFL planning

# METHODOLOGY

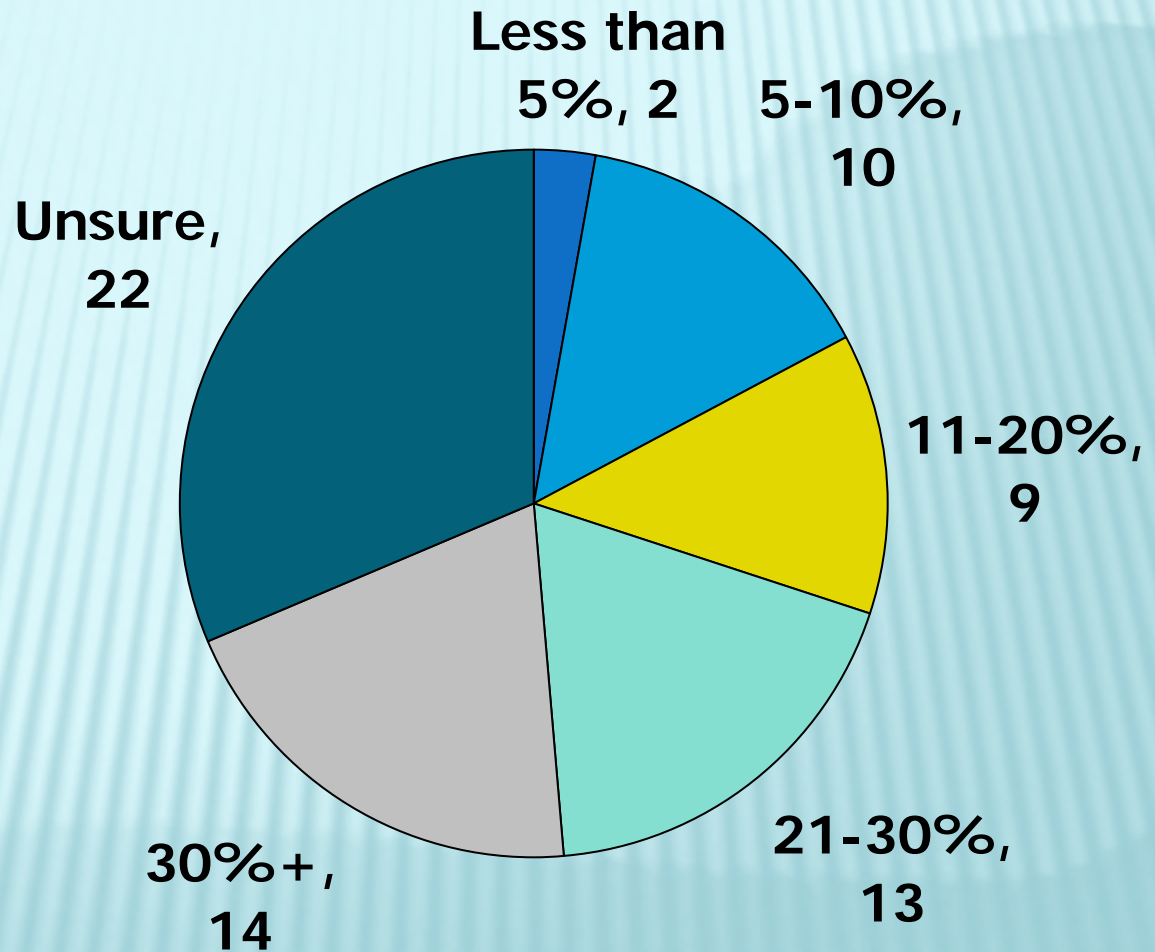
---

- × 70 key informants started
- × 69 completed (44% response rate)
- × Average time taken 11 minutes
  - + Some completed over the phone

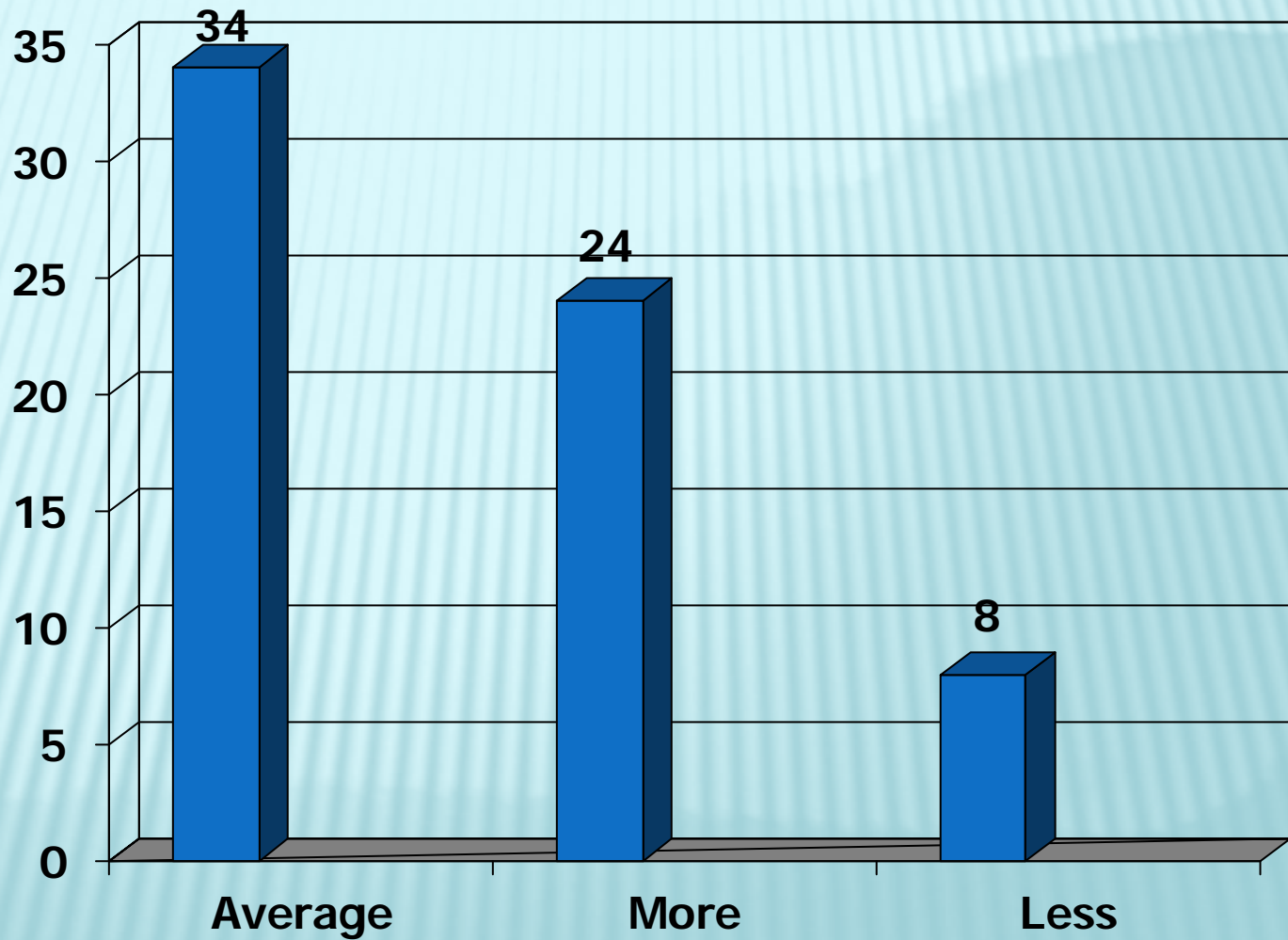
	<b>Very Imp</b>	<b>Some Imp</b>	<b>Neutral</b>	<b>Some Unimp</b>	<b>Not Imp</b>
<b>Trans.</b>	<b>38%</b>	<b>35</b>	<b>17</b>	<b>1</b>	<b>9</b>
<b>Safety</b>	<b>68</b>	<b>30</b>	<b>1</b>	<b>0</b>	<b>0</b>
<b>House</b>	<b>48</b>	<b>36</b>	<b>13</b>	<b>3</b>	<b>0</b>
<b>Tax</b>	<b>65</b>	<b>28</b>	<b>6</b>	<b>1</b>	<b>0</b>
<b>Work</b>	<b>40</b>	<b>38</b>	<b>13</b>	<b>7</b>	<b>1</b>
<b>Civic</b>	<b>18</b>	<b>43</b>	<b>26</b>	<b>10</b>	<b>3</b>
<b>Health</b>	<b>35</b>	<b>33</b>	<b>23</b>	<b>6</b>	<b>3</b>

	<b>Very Imp</b>	<b>Some Imp</b>	<b>Neutral</b>	<b>Some Unimp</b>	<b>Not Imp</b>
<b>Nut.</b>	<b>23%</b>	<b>29</b>	<b>36</b>	<b>6</b>	<b>6</b>
<b>Rec.</b>	<b>38</b>	<b>49</b>	<b>7</b>	<b>6</b>	<b>0</b>
<b>Library</b>	<b>32</b>	<b>43</b>	<b>17</b>	<b>3</b>	<b>4</b>
<b>Tech.</b>	<b>25</b>	<b>55</b>	<b>13</b>	<b>6</b>	<b>1</b>
<b>Zone</b>	<b>58</b>	<b>33</b>	<b>3</b>	<b>4</b>	<b>1</b>
<b>Codes</b>	<b>53</b>	<b>37</b>	<b>3</b>	<b>6</b>	<b>1</b>
<b>Service</b>	<b>31</b>	<b>44</b>	<b>18</b>	<b>4</b>	<b>3</b>

# CURRENT POPULATION OF OLDER AMERICANS

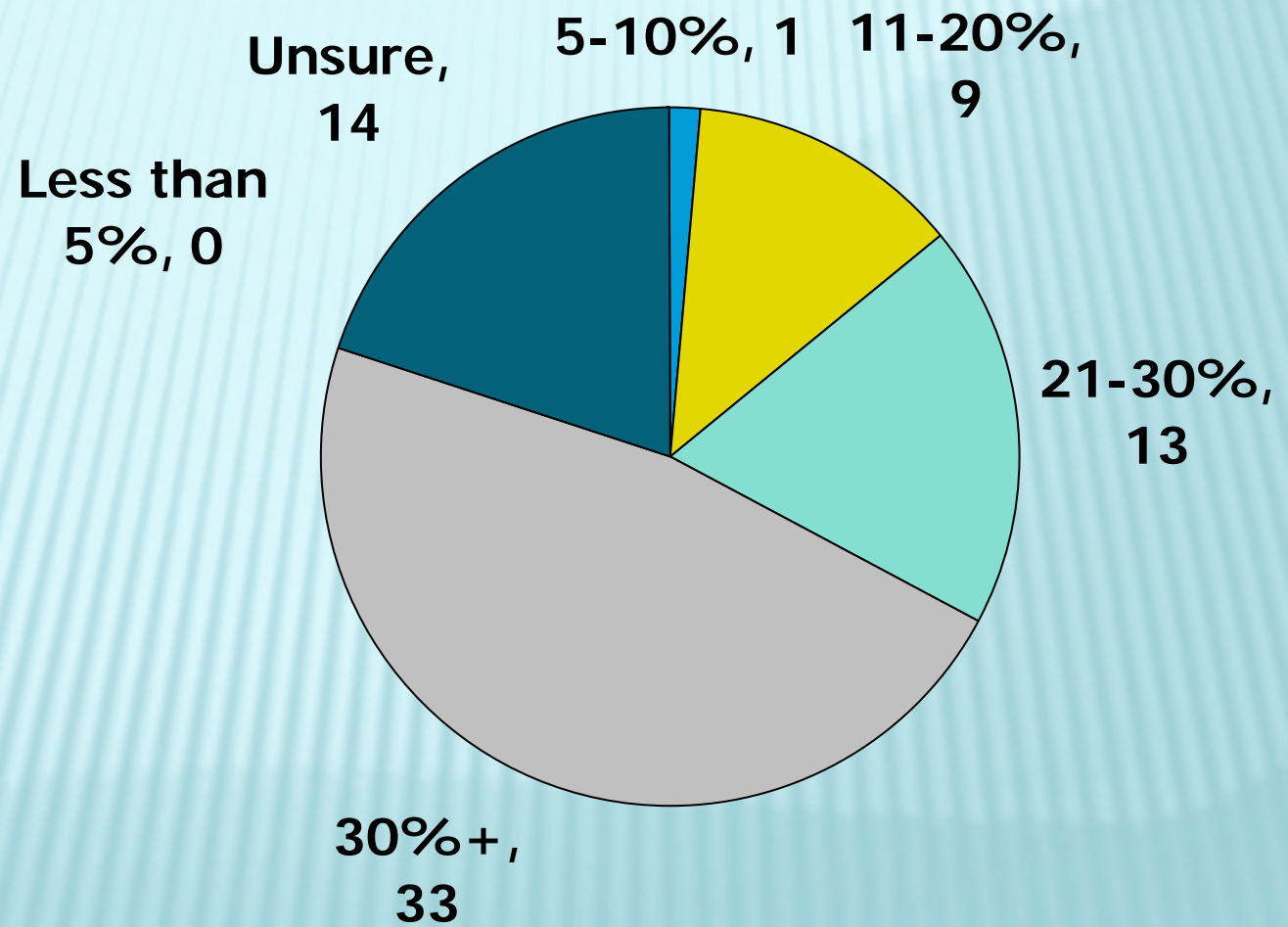


# COMPARED TO METRO MN?

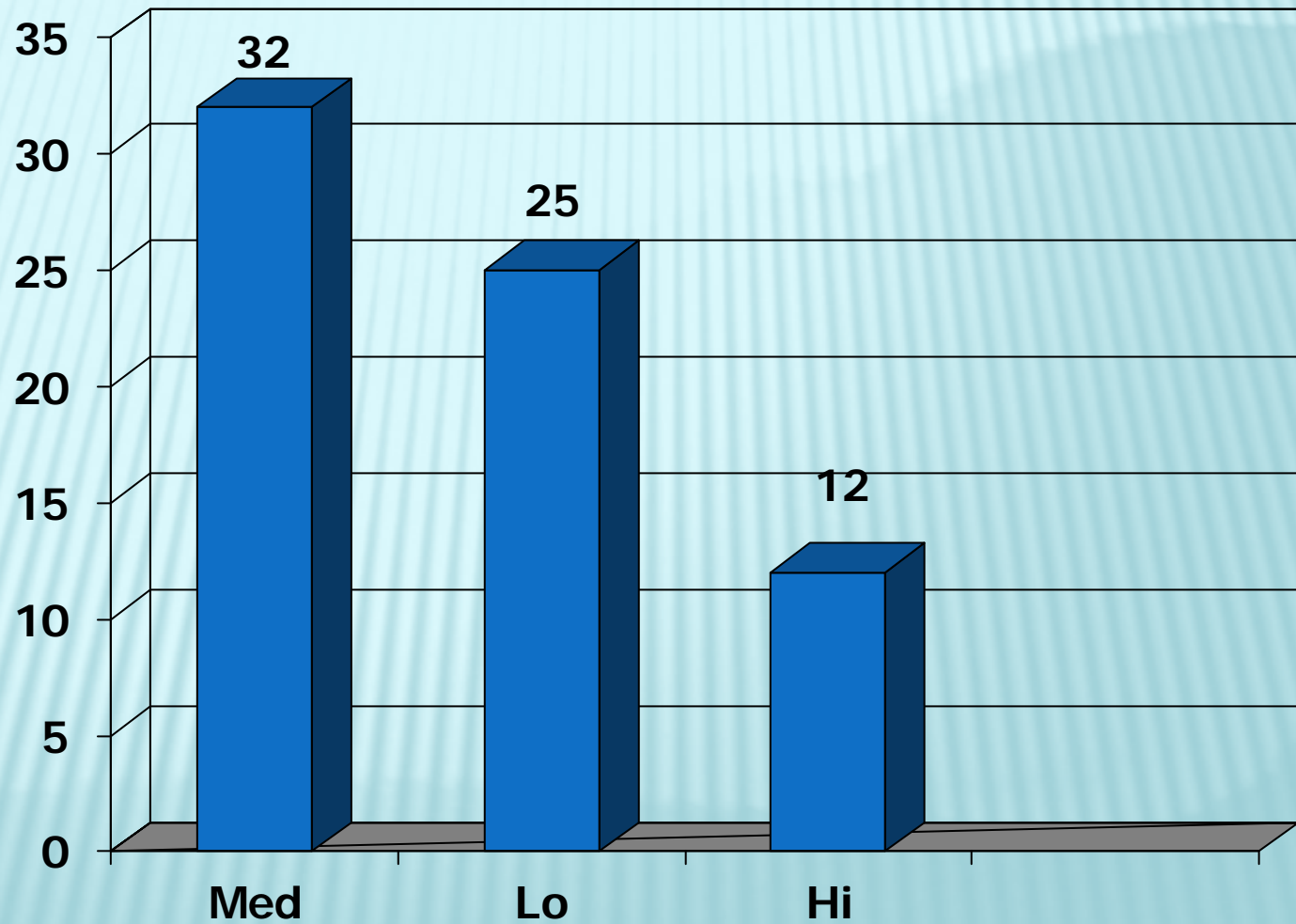


# BY 2020

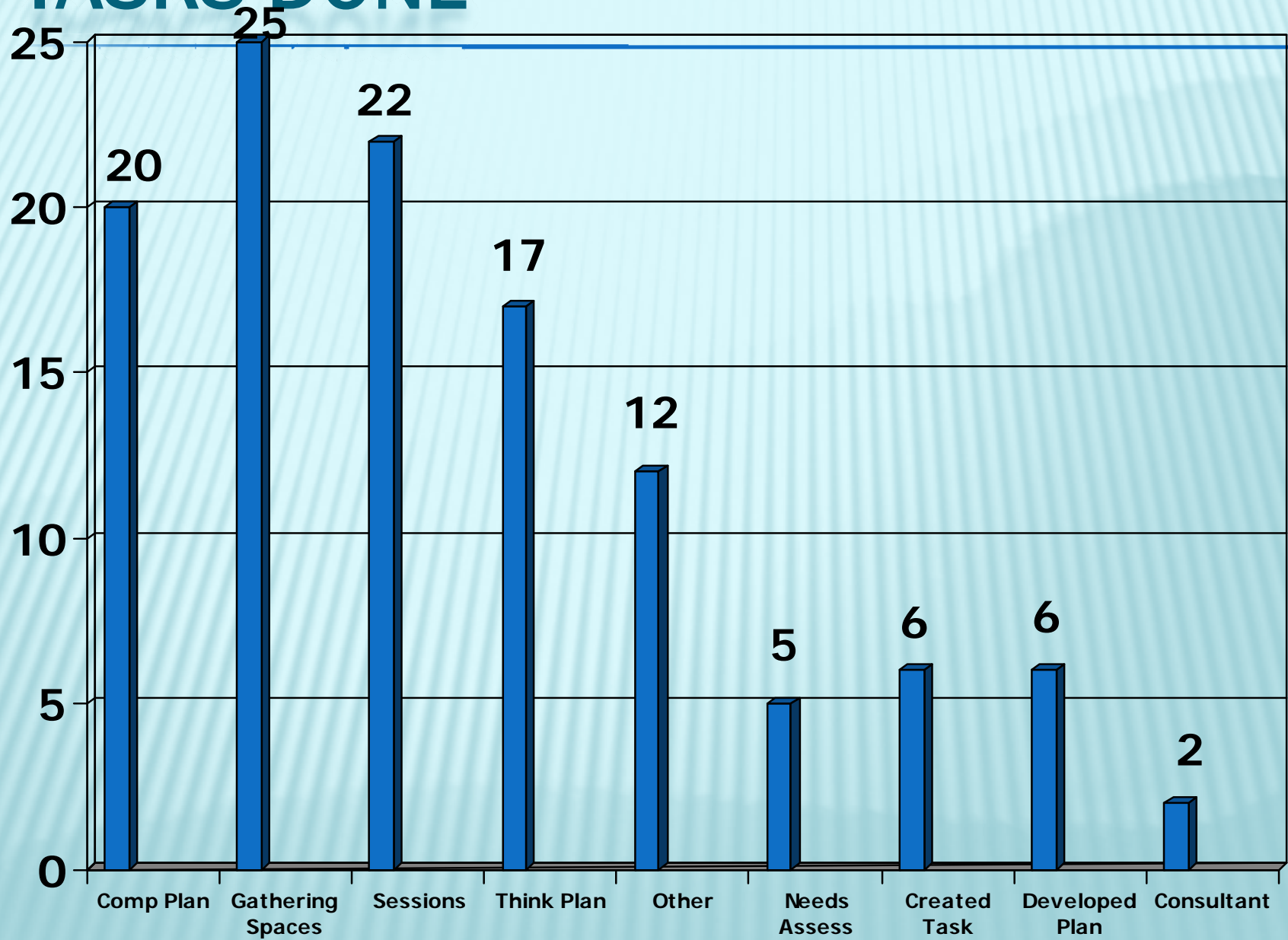
---



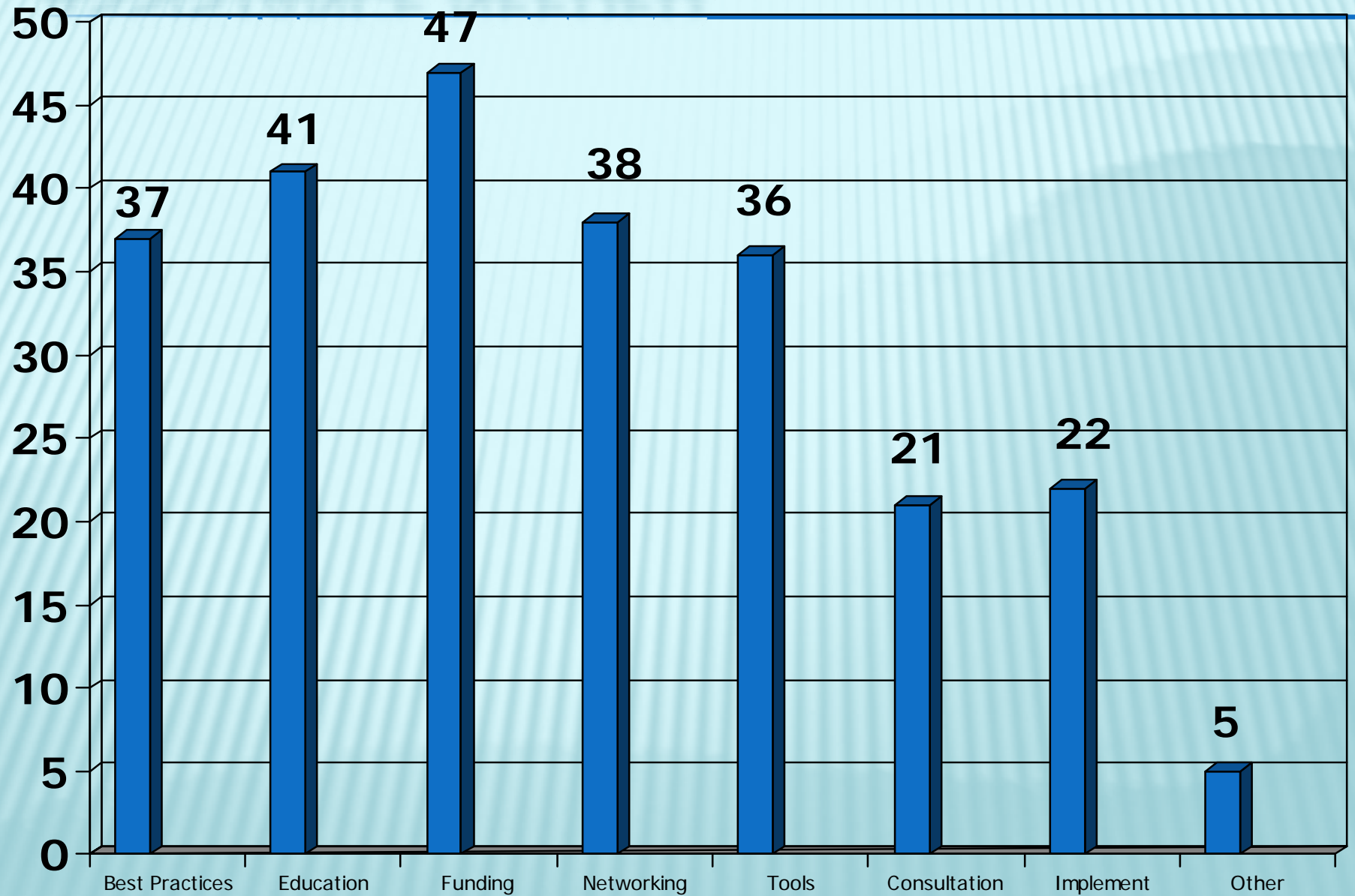
# PRIORITY TO PLAN FOR AGING



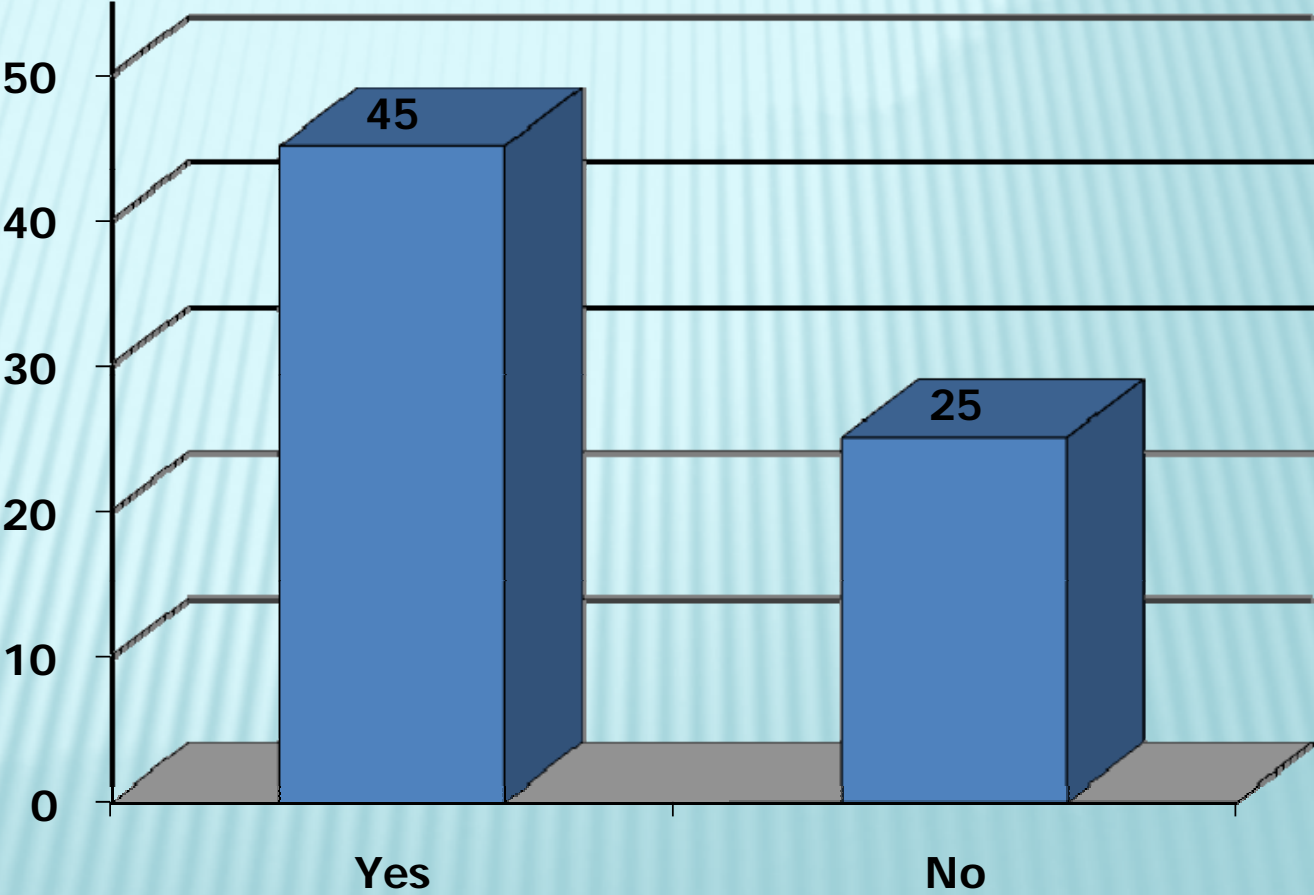
# TASKS DONE



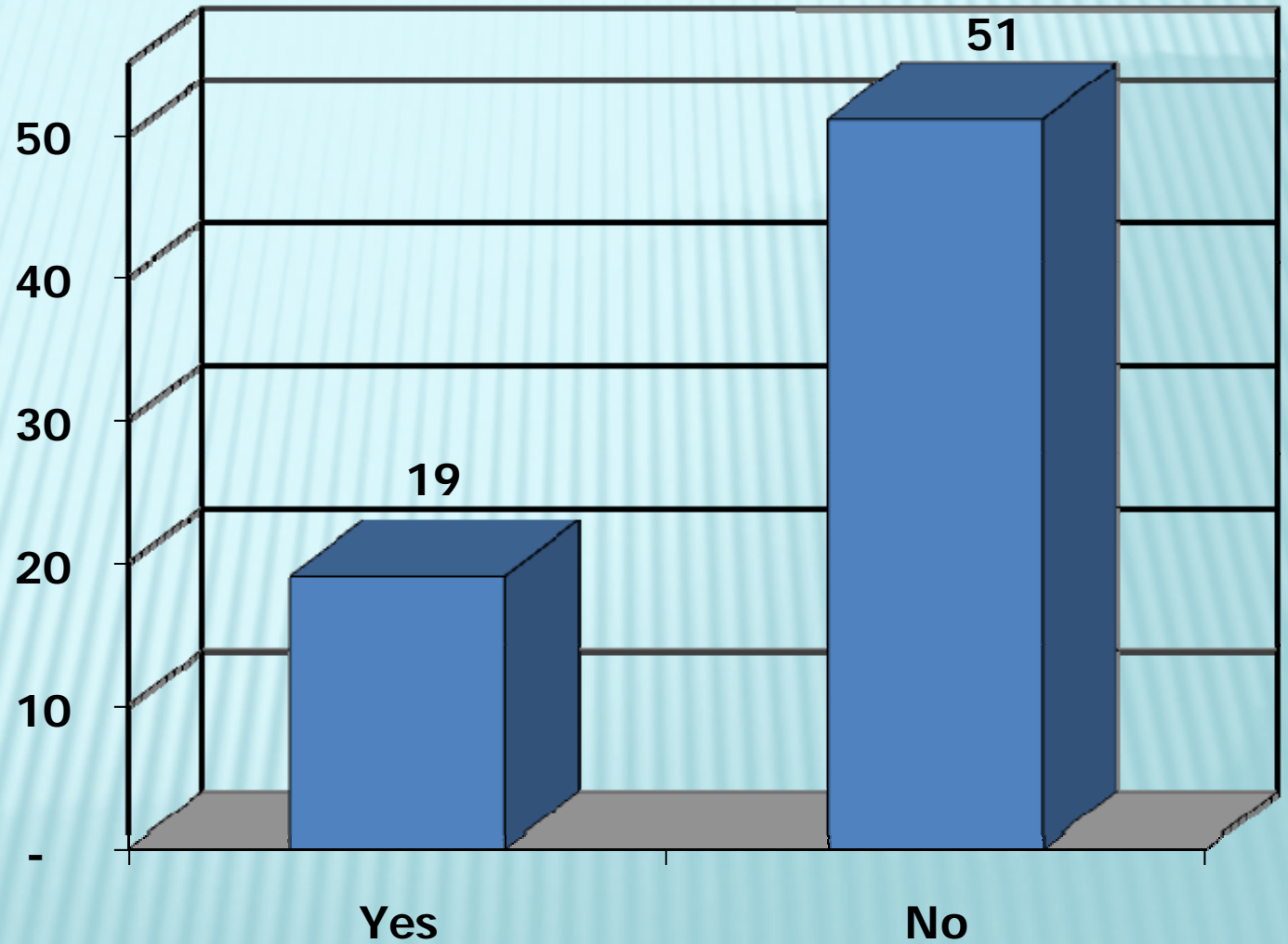
# ASSISTANCE NEEDED



# FAMILIAR WITH COUNCIL ON AGING?



# FAMILIAR WITH SENIOR LINKAGE LINE?



# DISCUSSION

---

- × In what ways do you receive information about trends in planning (not just aging)?
- × What is your municipality currently doing related to planning for an aging population?
- × What resources/assistance/other do you need to move forward?
  - + What format?

# NEXT STEPS

---

- × Local Governments

- + Bring back information to community
- + Contact CMCOA with questions

- × CMCOA

- + Analyze results of forums and study
- + Develop action plan that supports local governments in meeting the demographic challenge

# CONTACT

---

Central Minnesota Council on Aging

[www.cmcoa.org](http://www.cmcoa.org)

320-253-9349